

**Manley
Spangler
Smith
Architects**
A Professional Corporation

201221/15840
Duct and Pipe SD

Fabrication / Installation
may be undertaken. APPROVED
Approval does not authorize
changes in the contract
sum or contract time. APPROVED
AS NOTED

Fabrication / Installation
MAY NOT be undertaken. REVISE
AND
RESUBMIT
In resubmitting, limit
corrections to the items
marked. REJECTED

These drawings have been reviewed
only for compliance with General
Conditions AIA Document A201.
Review/Approval neither extends nor
alters any contractual obligations of the
Architect or Contractor.

BY: TBR
DATE: 11/19/2013

See engineer's comments.



MATHESON-BALL & ASSOCIATES, INC ENGINEERING CONSULTANTS

11285 Elkins Road; Suite F-3
Roswell, Georgia 30076
Phone: (770) 751-0773
Fax: (770) 751-9210
E-mail: gregg@mathesonball.com

SPALDING DRIVE ELEMENTARY SCHOOL – MBA JOB #12017 HVAC DUCT/PIPING SHOP DRAWING SUBMITTAL ENGINEERING COMMENTS

Review of submittals is for the benefit of the contractor. Submittals and shop drawings are not to be considered contract documents. Review is only for general conformance with the design concept of the project and general compliance with the information given in the contract documents. Any action shown is subject to the requirements of the plans and specifications. Contractor is responsible for dimensions which shall be confirmed and correlated at the job site; fabrication processes and techniques of construction; coordination of his work with that of all other trades; and the satisfactory performance of his work.

Contractor Coordination Required and Correct As Noted does not require re-submittal. The contractor is required to coordinate the items noted prior to ordering the equipment.

General Comments:

1. Contractor shall field verify exact dimensions and locations of structure, existing duct/pipe/conduit to remain, and new work of other trades prior to fabrication and installation of new duct & pipe - **Contractor Coordination Required**
2. Plans do not show required duct transitions and connections to existing duct and grilles to remain - **Contractor Coordination Required**
3. Piping plans of platform spaces are not included – **Submit Items**

Engineer Comments:

Sheets 4 & 7- ERU ducts shown as 18x24” – field verify available space above ceiling prior to fabrication and installation - Contractor Coordination Required

Sheet 8- RTU-5 – Return air branch taps into duct main for connection to branch grilles are not shown – Correct As Noted

Sheet 8- RTU-5 – By-pass valve BP-1 & connecting duct are not shown – Correct As Noted

Sheet 8- RTU-4 – By-pass valves BP-3 & 4 & connecting duct are not shown – Correct As Noted

Sheet 8- RTU-6 – By-pass valve BP-2 & connecting duct are not shown – Correct As Noted

Sheets 9 & 10- Platform Plans – Supply ducts for WSHPs are not shown to coordinate with new outdoor air ductwork – Correct As Noted

Sheet 10- Platform Plan – 14x10 outdoor air duct main dimension is missing – Correct As Noted

Sheet 11- Basement Piping Plan – Branch pipe sizes are too small – Correct As Noted

Sheet 17- Mechanical Room Piping Plan – Cooling tower is shown too close to exterior wall – **Correct As Noted**

Equipment submittals addressing prior comments, including the following Owner comments have not been submitted. Also, changes made to change order from Owner comments have not been addressed. These are listed below for convenience:

15600-HVAC Equipment –

Non-Ducted Split Systems – Submittal lists condensate pump to be internal – per the contract, condensate pump shall be sump type, mounted external to unit – **Correct As Noted**

Energy Recovery Units – Mfg. to verify that the ALC controller has control of all stages of heat in unit - **Contractor Coordination Required**

Energy Recovery Units – Submittal lists room sensor, de-humidistat, CO2 sensor - mfg. to verify that the ALC controller has control of all modes of unit operation - **Contractor Coordination Required**

15610-Hydronic Condensing Boilers – Contractor shall coordinate with control supplier and boiler supplier to insure that reset capability and separate start/stop capability from ALC to each boiler will be provided prior to ordering equipment - **Contractor Coordination Required**

15610-Hydronic Condensing Boilers – Contractor shall coordinate with gas flue & combustion duct supplier and boiler supplier to insure that the completed installation will meet the boiler manufacturer's stringent requirements for proper operation prior to ordering equipment - **Contractor Coordination Required**

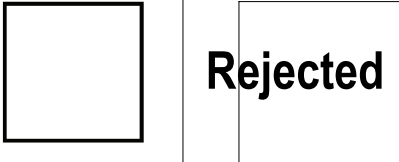
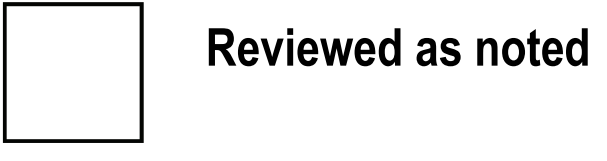
15920-Hydronic Water Treatment – Contractor shall verify that the water meters will be capable of, and configured for, 1 pulse per gallon metering to the EMS - **Contractor Coordination Required**

Change Order Comments:

1. Reference Sheet M3.1: Air Separator schedule – Revise to be an air separator and dirt separator serving the heat pump loop piping system.
2. Reference Specification Section 15600 – Ductless Split Systems – Add remote operation adapter to allow EMS enable/disable
3. Reference Specification Section 15600 – Rooftop Units – Add the following-
 - a. All access doors to include hinges and tool-less entry latches
 - b. All units to include electro-mechanical controls, not micro-processor based controls
 - c. All units shall be provided with hail guards covering the face of condenser coils

Gregg Cox
Matheson-Ball & Associates, Inc.
November 19, 2013

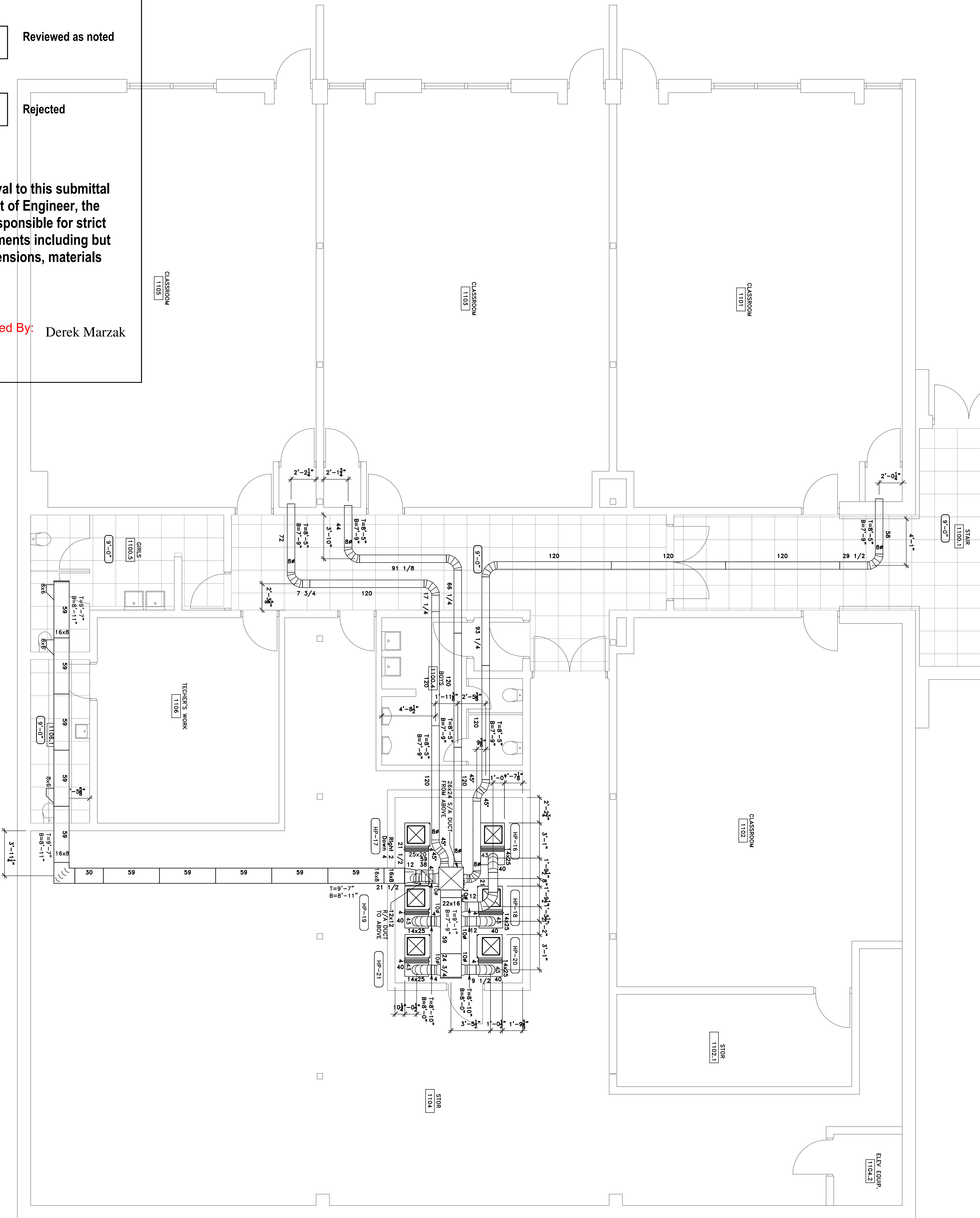
Triad Construction Co., Inc.
5136 Southridge Parkway
College Park GA



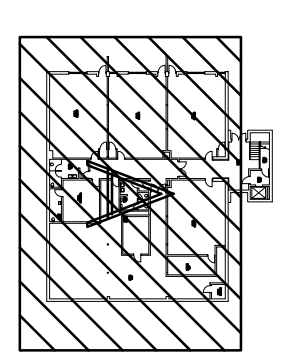
Regardless of changes to or approval to this submittal by the General Contractor, Architect of Engineer, the subcontractor and/or supplier is responsible for strict compliance with the contract documents including but not limited to quantities, detail dimensions, materials and schedule constraints

Date: 11/6/13

Reviewed By: Derek Marzak



Bardi
Mechanical
2175 Royal Palm Ct.
Norcross, GA 30071
T 770-283-9300 F 770-283-9400



KEY PLAN

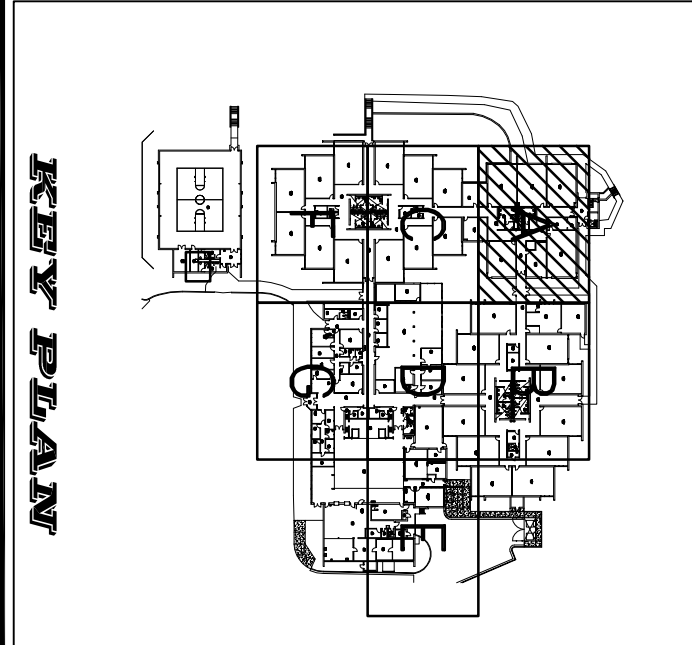
SPALDING DRIVE ELEMENTARY SCHOOL
SPALDING DRIVE ELEMENTARY SCHOOL
SHEET METAL - PARTIAL
LEVEL - L0 - SECTOR A

REVISION	DESCRIPTION	DATE	ISSUED BY
1	ISSUED FOR CLIENT REVIEW	10/28/13	JMB

Document Routing

DISPOSITION	DATE
<input checked="" type="checkbox"/> Issued for Client Review	10/28/13
<input type="checkbox"/> Issued for Engineer Review	
<input type="checkbox"/> Issued for Construction	
<input type="checkbox"/> Issued for As-Built	

HV-L0-A



SPALDING DRIVE ELEMENTARY SCHOOL
SPALDING DRIVE ELEMENTARY SCHOOL
SHEET METAL - PARTIAL
LEVEL - L1 - SECTOR A

REVISION	DESCRIPTION	DATE	ISSUED BY
1	ISSUED FOR CLIENT REVIEW	10/28/13	JMB

Document Routing

DISPOSITION	DATE
<input checked="" type="checkbox"/> Issued for Client Review	10/28/13
<input type="checkbox"/> Issued for Engineer Review	
<input type="checkbox"/> Issued for Construction	
<input type="checkbox"/> Issued for As-Built	

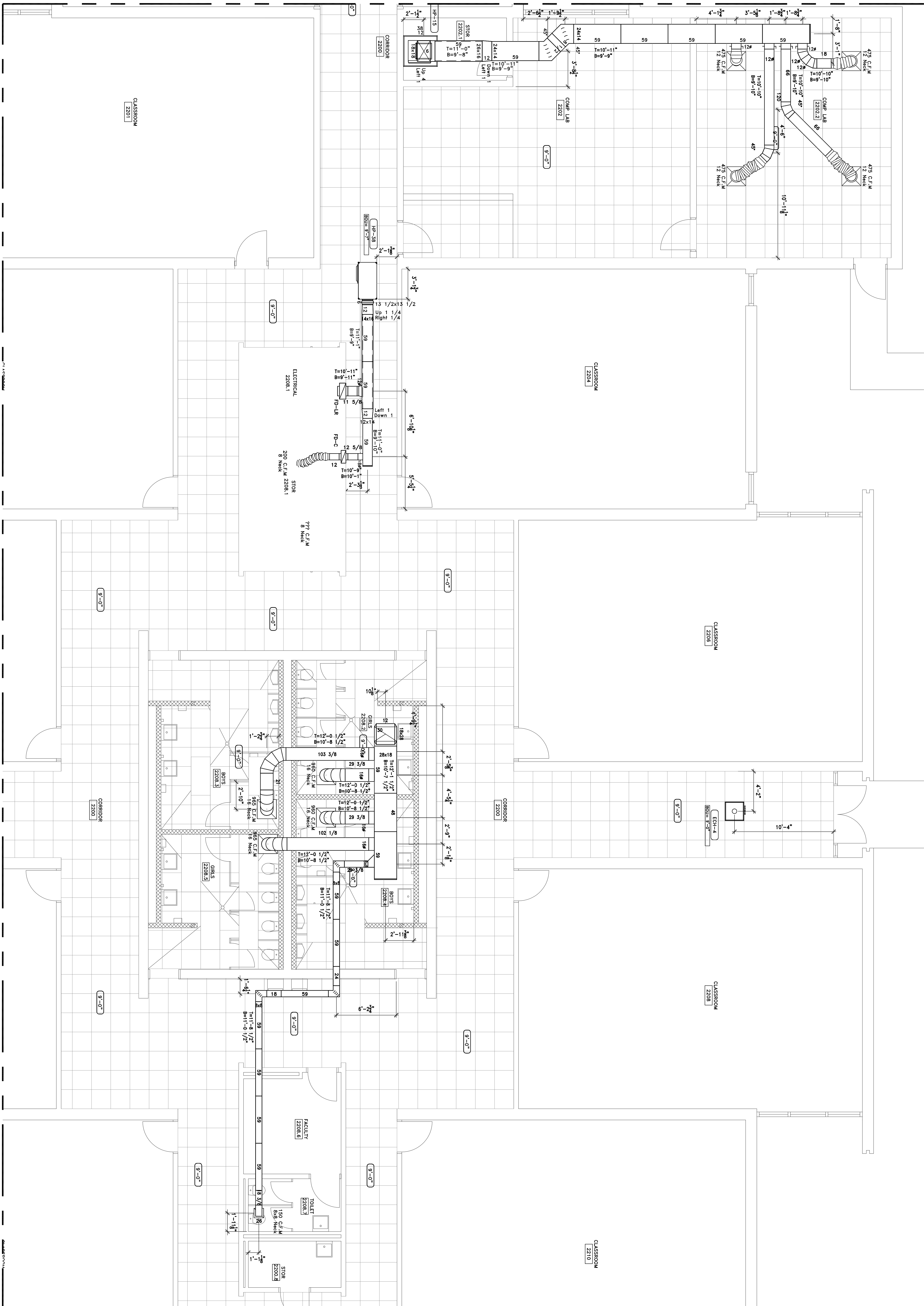
HV-L1-A



FOR CONTINUATION SEE HV-L1-C

FOR CONTINUATION SEE HV-L1-B

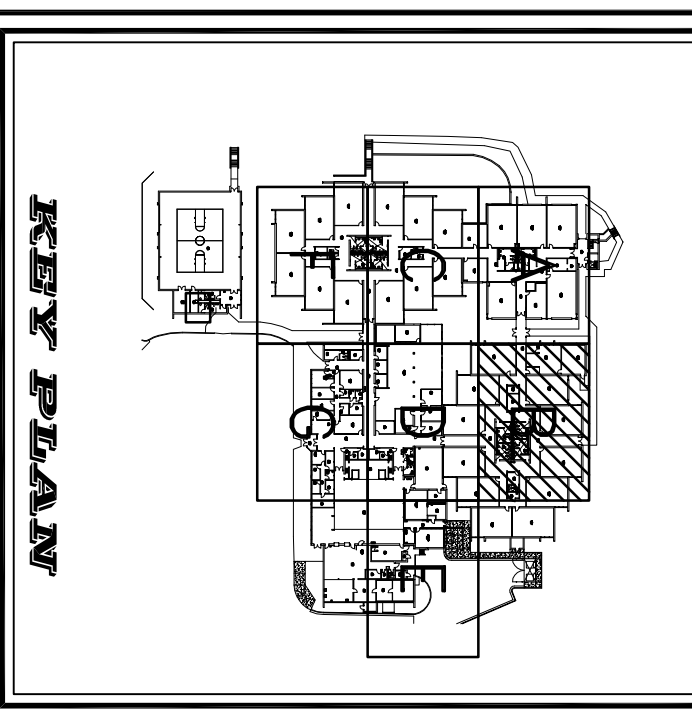
FOR CONTINUATION SEE HV-L1-A



FOR CONTINUATION SEE HV-L1-D

ADRIANTA
 DETAILING - MEP COORDINATION - BIM SERVICES
 TECHNOLOGIES INTEGRATED
 75 Indian Creek Trail, Spalding County, Georgia 30077
 (770) 770-5538 (F) 770-755-8183
 E-mail: adrianta@adrianta.com Web: www.adrianta.com

Bardi
 Mechanical
 2175 Royal Palm Ct.
 Norcross, GA 30071
 T 770-283-9300 F 770-283-9400



SPALDING DRIVE ELEMENTARY SCHOOL
SPALDING DRIVE ELEMENTARY SCHOOL
SHEET METAL - PARTIAL
LEVEL - L1 - SECTOR B

REVISION	DESCRIPTION	DATE	ISSUED BY
1	ISSUED FOR CLIENT REVIEW	10/28/13	JMB

Document Routing

DISPOSITION	DATE
<input checked="" type="checkbox"/> Issued for Client Review	10/28/13
<input type="checkbox"/> Issued for Engineer Review	
<input type="checkbox"/> Issued for Construction	
<input type="checkbox"/> Issued for As-Built	

HV-L1-B

DATE PLOTTED: 10/28/13
 PLOT DATE: 10/28/13
 PLOT TIME: 10:28:13
 PROJECT NO.: 10/28/13
 SHEET NUMBER: HV-L1-B

FOR CONTINUATION SEE HV-L1-A

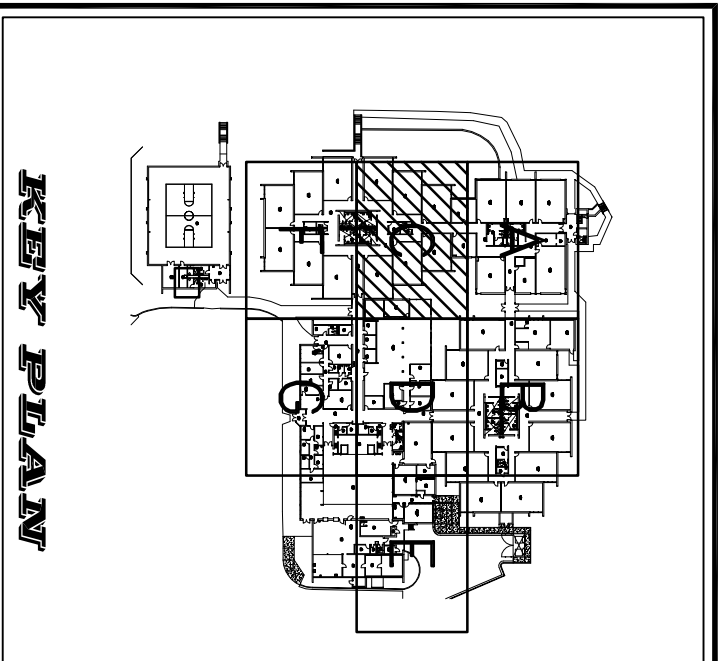


FOR CONTINUATION SEE HV-L1-D

FOR CONTINUATION SEE HV-L1-F

adianta
 DETAILING - MEP COORDINATION - BIM SERVICES
 TECHNOLOGIES INTEGRATED
 75 Indian Creek Trail, Spalding, Georgia 30077
 (770) 755-9182 (770) 755-9183
 E-mail: adianta@adianta.com Web: www.adianta.com

Bardi
 Mechanical
 2175 Royal Palm Ct.
 Norcross, GA 30071
 T 770-283-9300 F 770-283-9400



SPALDING DRIVE ELEMENTARY SCHOOL
SPALDING DRIVE ELEMENTARY SCHOOL
SHEET METAL - PARTIAL
LEVEL - L1 - SECTOR C

REVISION	DESCRIPTION	DATE	ISSUED BY
1	ISSUED FOR CLIENT REVIEW	10/28/13	JMB

Document Routing

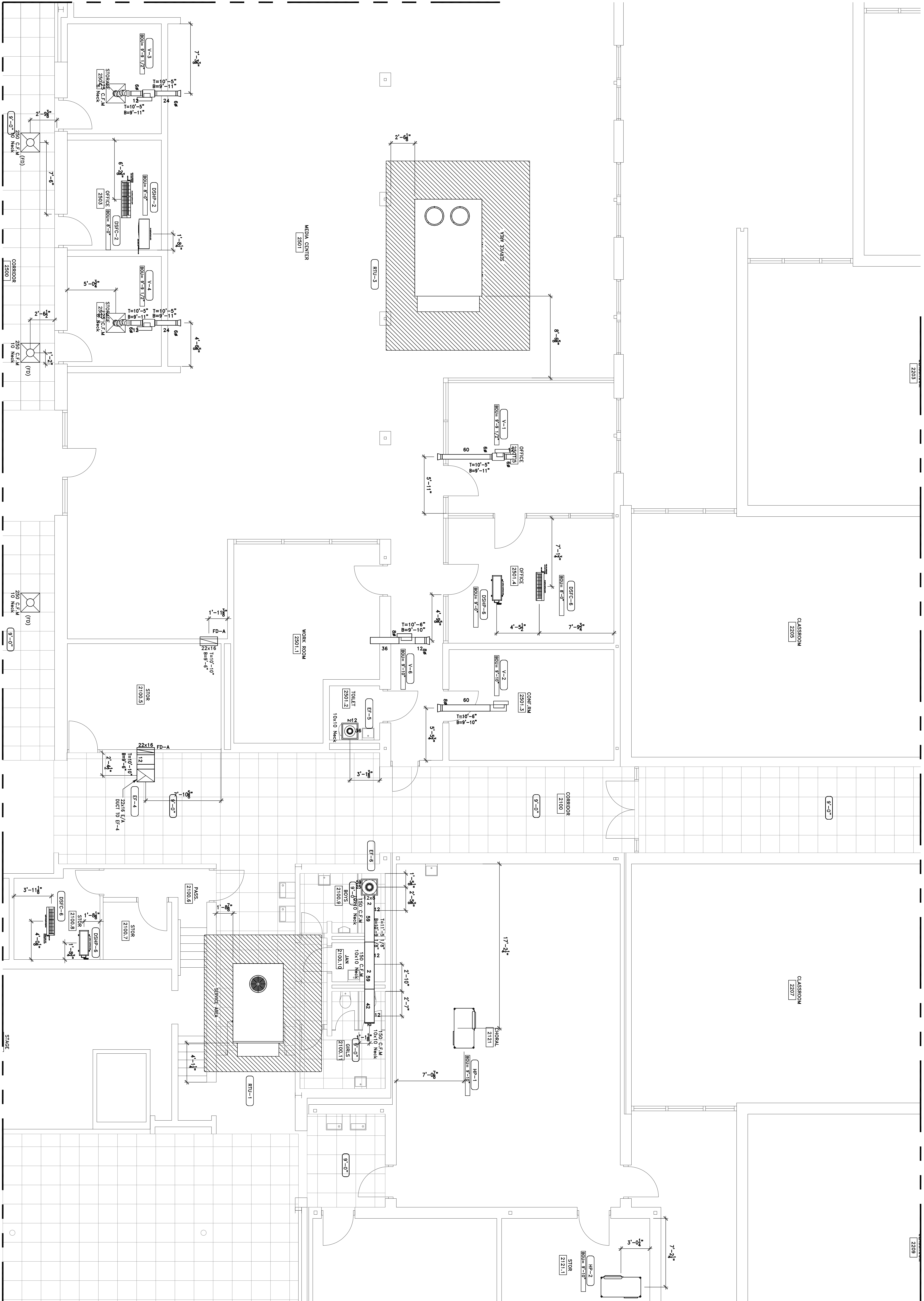
DISPOSITION	DATE
<input checked="" type="checkbox"/> Issued for Client Review	10/28/13
<input type="checkbox"/> Issued for Engineer Review	
<input type="checkbox"/> Issued for Construction	
<input type="checkbox"/> Issued for As-Built	

HV-L1-C

DATE PLOTTED: 10/28/13
 PLOT DATE: 10/28/13
 PLOT TIME: 11:00 AM
 PROJECT NO.: 10/28/13
 SHEET NUMBER: HV-L1-C

FOR CONTINUATION SEE HV-L1-C

FOR CONTINUATION SEE HV-L1-B

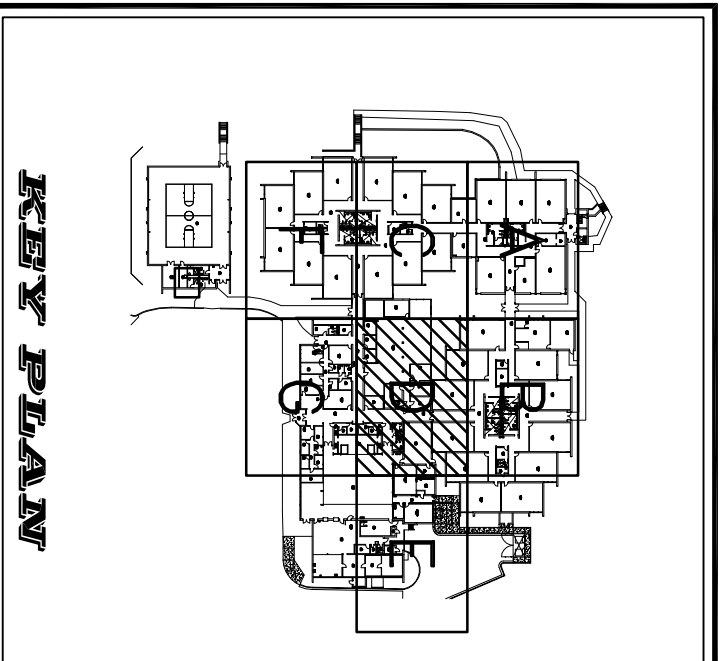


FOR CONTINUATION SEE HV-L1-E

FOR CONTINUATION SEE HV-L1-G

Spalding Drive
 75 Indian Creek Trail, Spalding County, Georgia 30077
 (770) 770-5539
 E-Mail: info@spalding.com

Bardi
 Mechanical
 2175 Royal Palm Ct.
 Norcross, GA 30071
 T 770-283-9300 F 770-283-9400



SPALDING DRIVE ELEMENTARY SCHOOL
SPALDING DRIVE ELEMENTARY SCHOOL
SHEET METAL - PARTIAL
LEVEL - L1 - SECTOR D

REVISION	DESCRIPTION	DATE	ISSUED BY
1	ISSUED FOR CLIENT REVIEW	10/28/13	JMB

Document Routing

DISPOSITION	DATE
Issued for Client Review	10/28/13
Issued for Engineer Review	
Issued for Construction	
Issued for As-Built	

HV-L1-D

DATE PLOTTED: 10/28/13
 PLOT SCALE: 1" = 10'-0"
 PROJECT NO.: L1-NVAC.dwg
 SHEET NUMBER: HV-L1-D

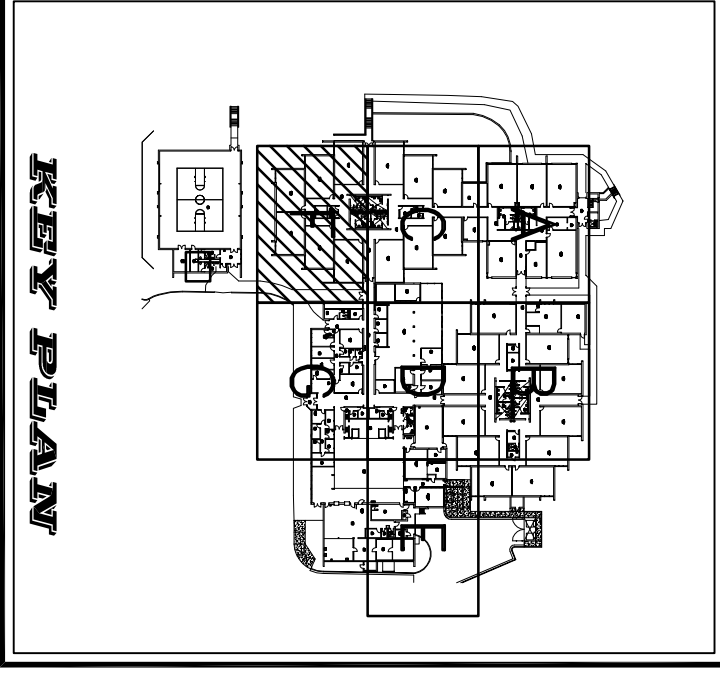
FOR CONTINUATION SEE HV-L1-C



FOR CONTINUATION SEE HV-L1-G

ADRIANTA
 DETAILING - MEP COORDINATION - BIM SERVICES
 TECHNOLOGIES INTEGRATED
 75 Indian Creek Trail, Spalding, Georgia 30077
 (770) 770-5538 (770) 770-5538
 E-mail: adrianta@adrianta.com Web: www.adrianta.com

Bardi
 Mechanical
 2175 Royal Palm Ct.
 Norcross, GA 30071
 T 770-283-9300 F 770-283-9400



SPALDING DRIVE ELEMENTARY SCHOOL

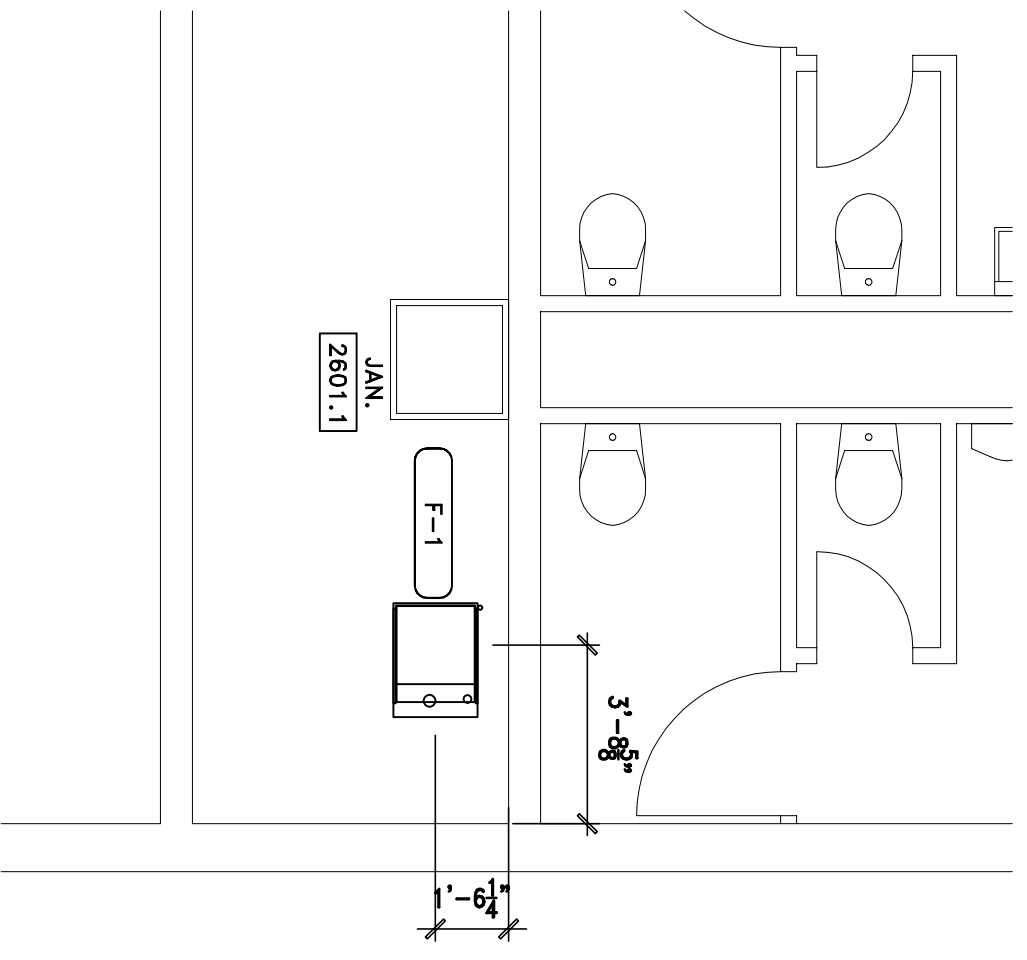
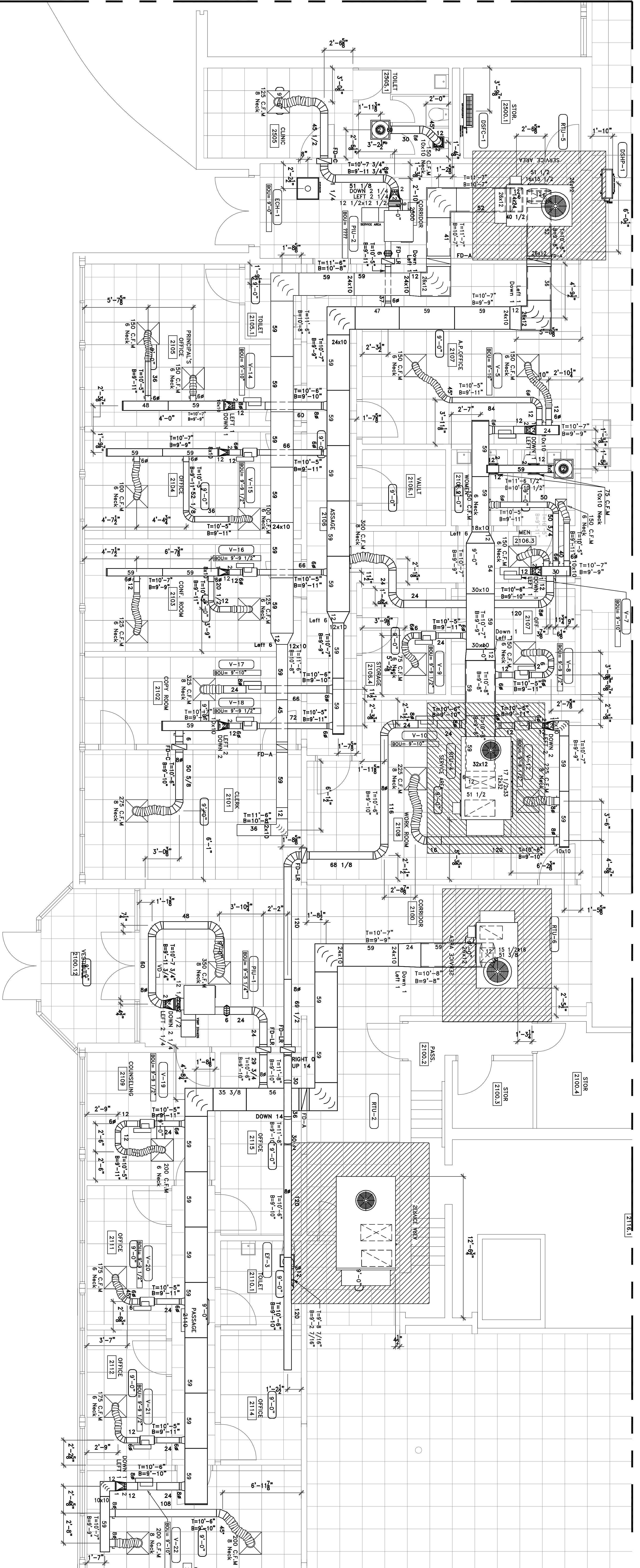
SPALDING DRIVE ELEMENTARY SCHOOL
 SHEET METAL - PARTIAL
 LEVEL - L1 - SECTOR F

REVISION	DESCRIPTION	DATE	ISSUED BY
1	ISSUED FOR CLIENT REVIEW	10/28/13	JMB

Document Routing

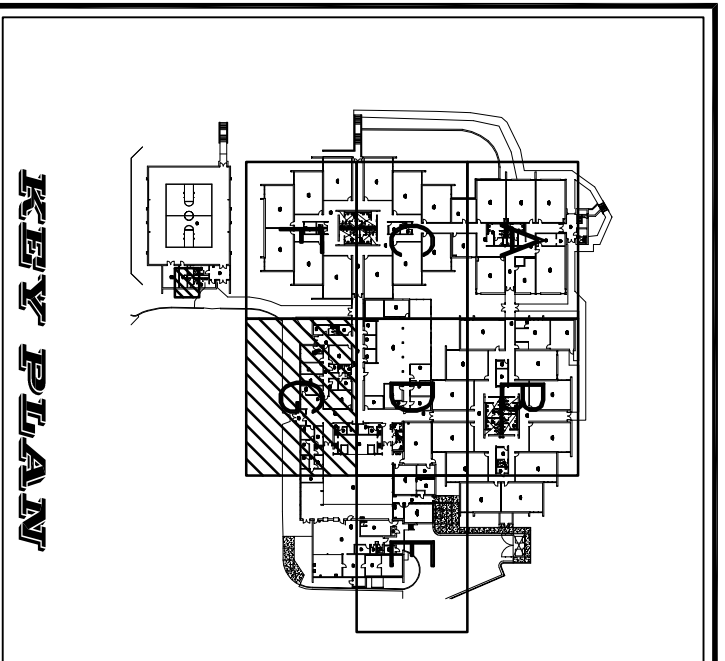
DISPOSITION	DATE
<input checked="" type="checkbox"/> Issued for Client Review	10/28/13
<input type="checkbox"/> Issued for Engineer Review	
<input type="checkbox"/> Issued for Construction	
<input type="checkbox"/> Issued for As-Built	

DATE PLOTTED: 10/28/13
 PLOT DATE: 10/28/13
 PLOT SCALE: 1" = 1'-0"
 PLOT SIZE: 11" x 17"
 PROJECT NO.: LI-NVAL.dwg
 SHEET NUMBER: HV-L1-F



GDPLANETA
 DETAILING - MEP COORDINATION - BIM SERVICES
 TECHNOLOGIES INTEGRATED
 75 Indian Creek Trail, Spalding County, Georgia 30077
 (770) 770-5539 (770) 770-5539
 E-Mail: info@gdplaneta.com Web: www.gdplaneta.com

Bardi
 Mechanical
 2175 Royal Palm Ct.
 Norcross, GA 30071
 T 770-283-9300 F 770-283-9400



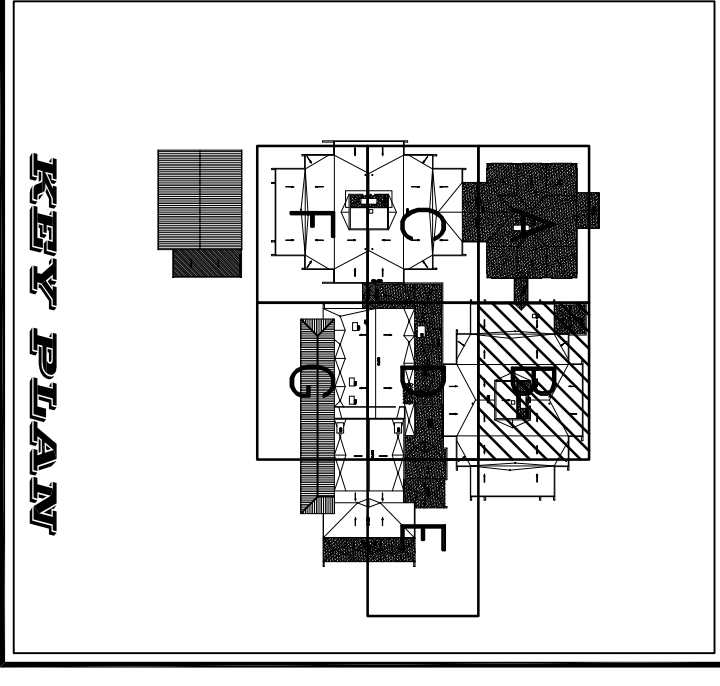
SPALDING DRIVE ELEMENTARY SCHOOL
SPALDING DRIVE ELEMENTARY SCHOOL
SHEET METAL - PARTIAL
LEVEL - L1 - SECTOR G

REVISION	DESCRIPTION	DATE	ISSUED BY
1	ISSUED FOR CLIENT REVIEW	10/28/13	JMB

Document Routing

DISPOSITION	DATE
<input checked="" type="checkbox"/> Issued for Client Review	10/28/13
<input type="checkbox"/> Issued for Engineer Review	
<input type="checkbox"/> Issued for Construction	
<input type="checkbox"/> Issued for As-Built	

DATE ISSUED: 10/28/13
 DRAWING SCALE: 1/4" = 1'-0"
 PROJECT NO.: LI-NVALC.dwg
 SHEET NUMBER: **HV-L1-G**



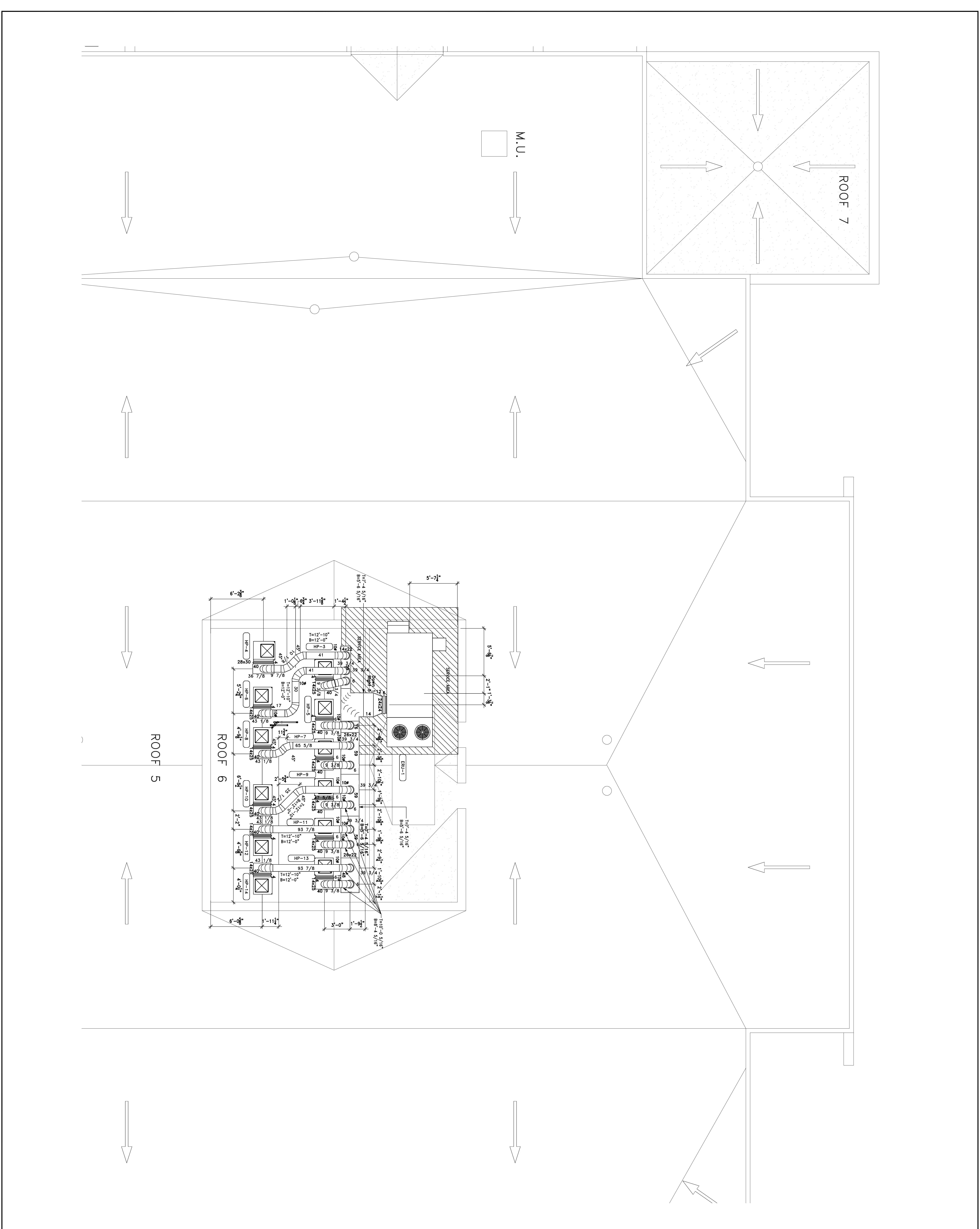
SPALDING DRIVE ELEMENTARY SCHOOL
SPALDING DRIVE ELEMENTARY SCHOOL
SHEET METAL - PARTIAL
LEVEL - ROOF - SECTOR B

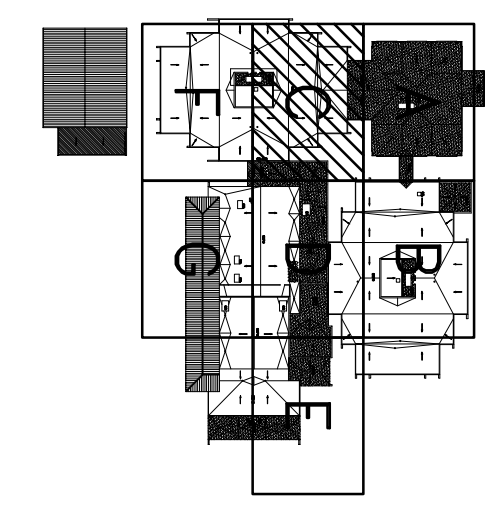
REVISION	DESCRIPTION	DATE	ISSUED BY
1	ISSUED FOR CLIENT REVIEW	10/28/13	JMB

Document Routing

DISPOSITION	DATE
<input checked="" type="checkbox"/> Issued for Client Review	10/28/13
<input type="checkbox"/> Issued for Engineer Review	
<input type="checkbox"/> Issued for Construction	
<input type="checkbox"/> Issued for As-Built	

HV-ROOF-B
 DRAWN BY: MIRONA
 DATE: 10/28/13
 PROJECT NO: 10/28/13
 SHEET NUMBER:





KEY PLAN

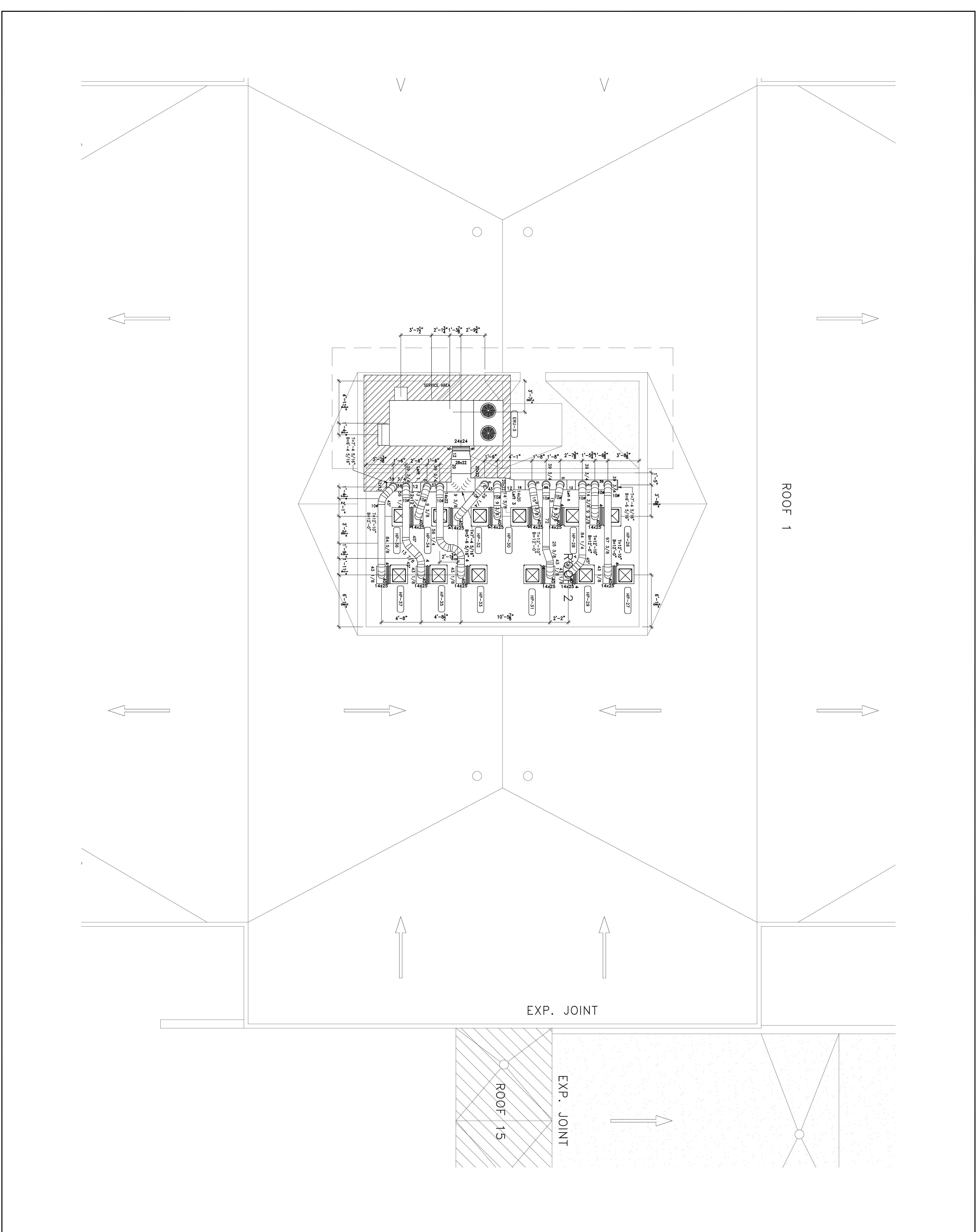
SPALDING DRIVE ELEMENTARY SCHOOL
 SPALDING DRIVE ELEMENTARY SCHOOL
 SHEET METAL - PARTIAL
 LEVEL - ROOF - SECTOR C

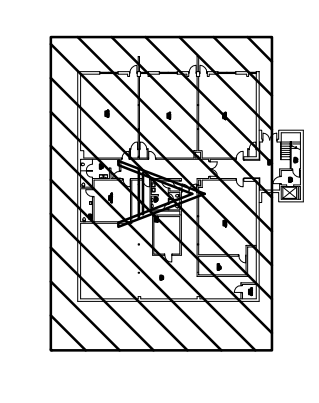
REVISION	DESCRIPTION	DATE	ISSUED BY
1	ISSUED FOR CLIENT REVIEW	10/28/13	JMB

Document Routing

DISPOSITION	DATE
<input checked="" type="checkbox"/> Issued for Client Review	10/28/13
<input type="checkbox"/> Issued for Engineer Review	
<input type="checkbox"/> Issued for Construction	
<input type="checkbox"/> Issued for As-Built	

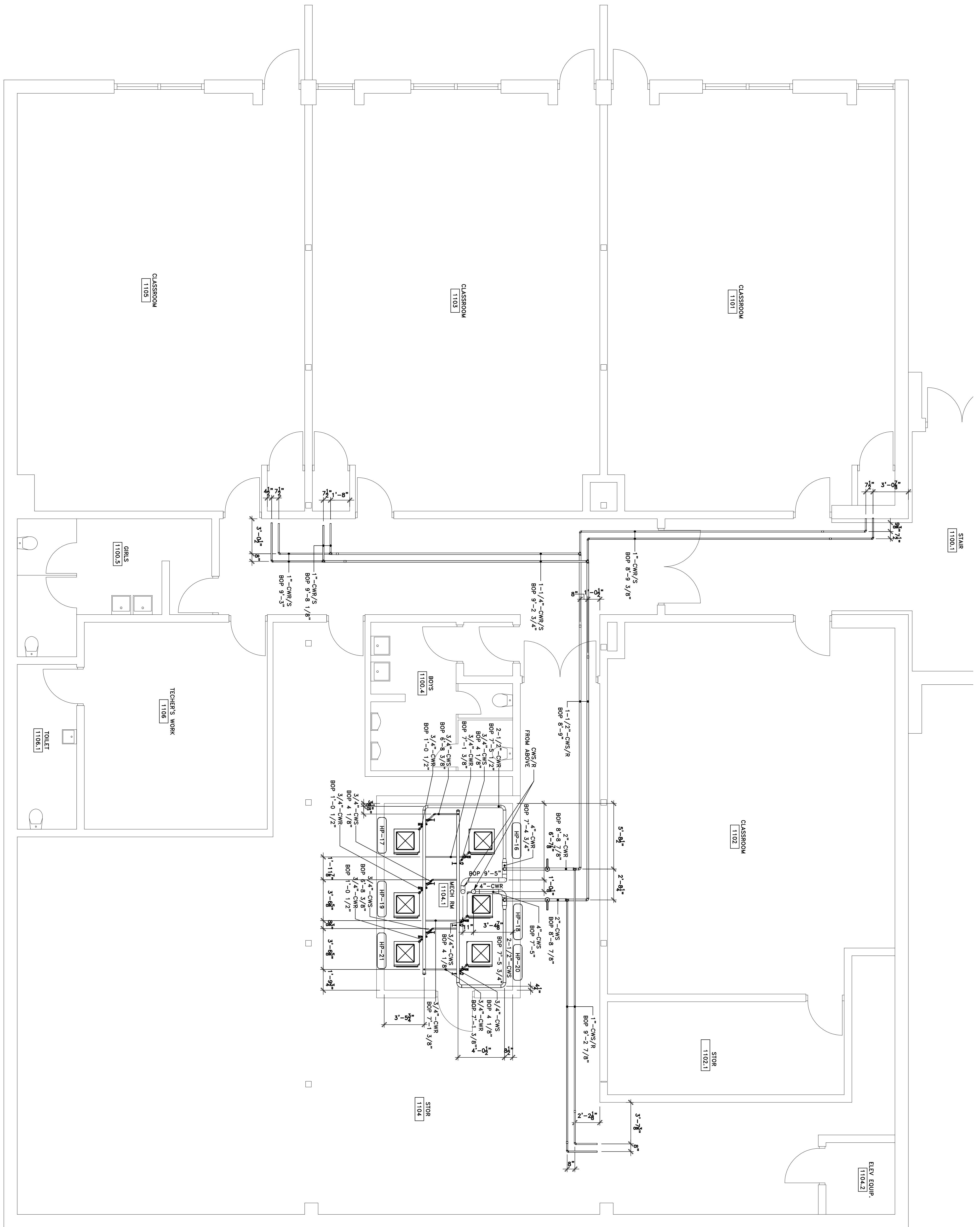
DRAWING BY: **MERWIN** DATE ISSUED: **10/28/13**
 PROJECT NO.: **10/28/13**
 SHEET NO.: **10/28/13**
HV-ROOF-C





KEY PLAN

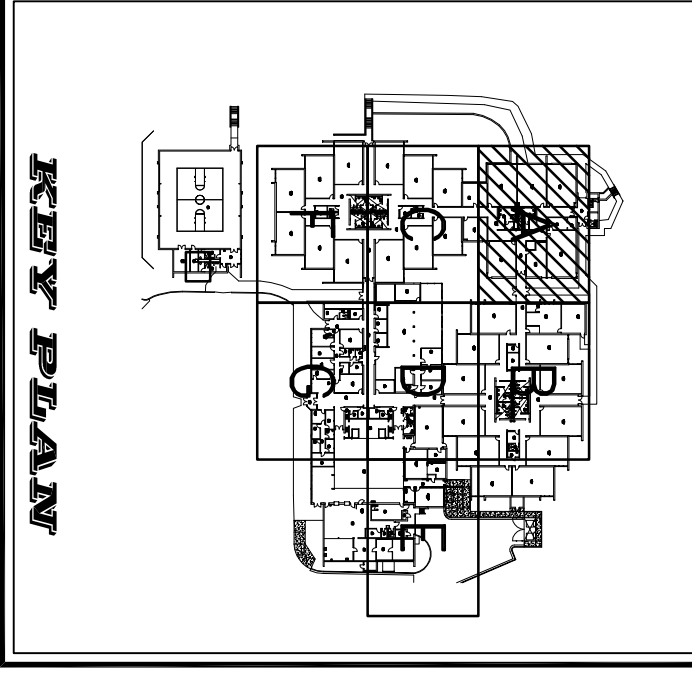
SPALDING DRIVE ELEMENTARY SCHOOL
SPALDING DRIVE ELEMENTARY SCHOOL
MECHANICAL PIPING - PARTIAL
LEVEL - L0 - SECTOR A



REVISION	DESCRIPTION	DATE	ISSUED BY
1	ISSUED FOR CLIENT REVIEW	10/28/13	JMB

Document Routing

DISPOSITION	DATE
<input checked="" type="checkbox"/> Issued for Client Review	10/28/13
<input type="checkbox"/> Issued for Engineer Review	
<input type="checkbox"/> Issued for Construction	
<input type="checkbox"/> Issued for As-Built	



SPALDING DRIVE ELEMENTARY SCHOOL

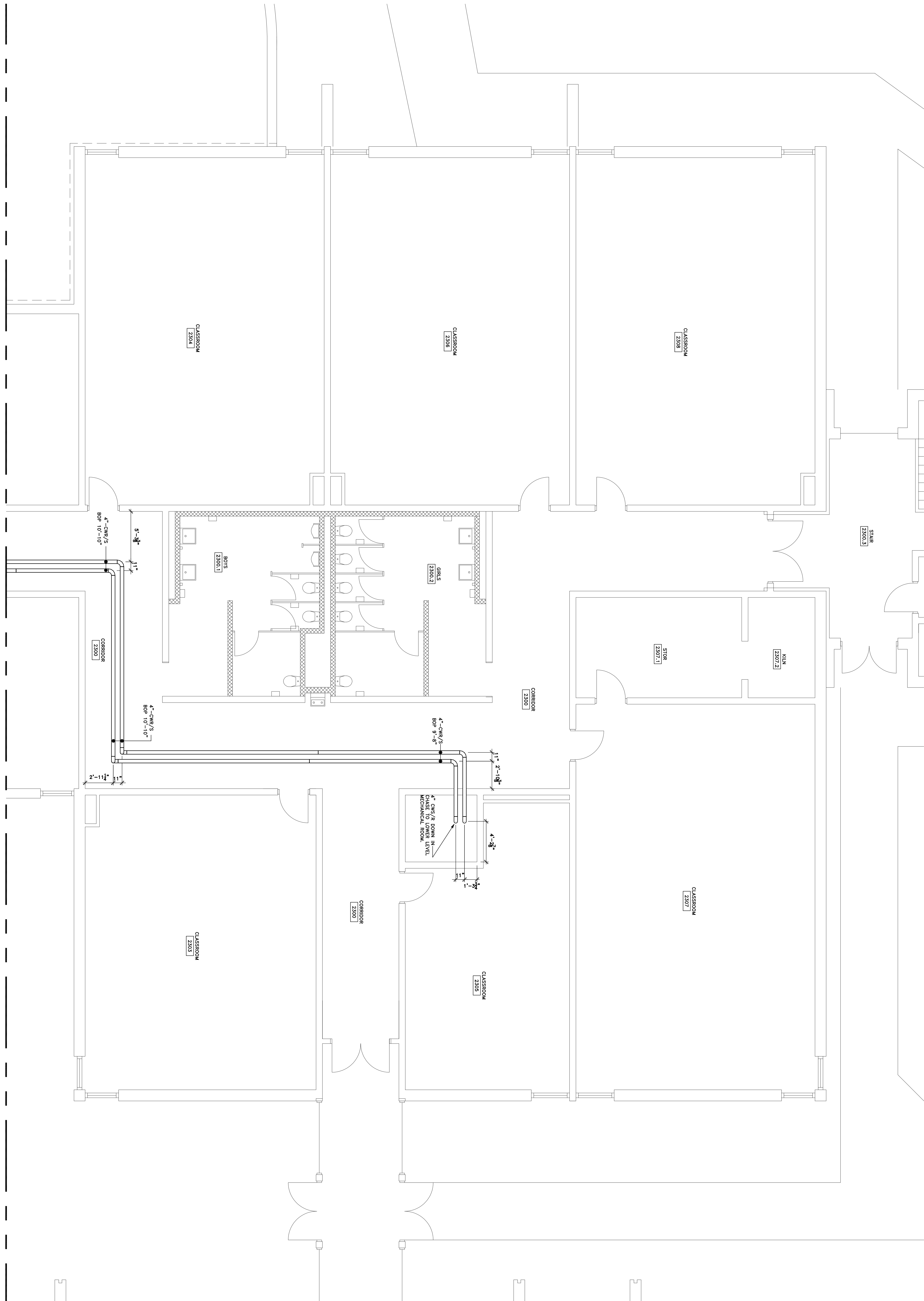
SPALDING DRIVE ELEMENTARY SCHOOL
MECHANICAL PIPING - PARTIAL
LEVEL 1 - SECTOR A

REVISION	DESCRIPTION	DATE	ISSUED BY
1	ISSUED FOR CLIENT REVIEW	10/28/13	JMB

Document Routing

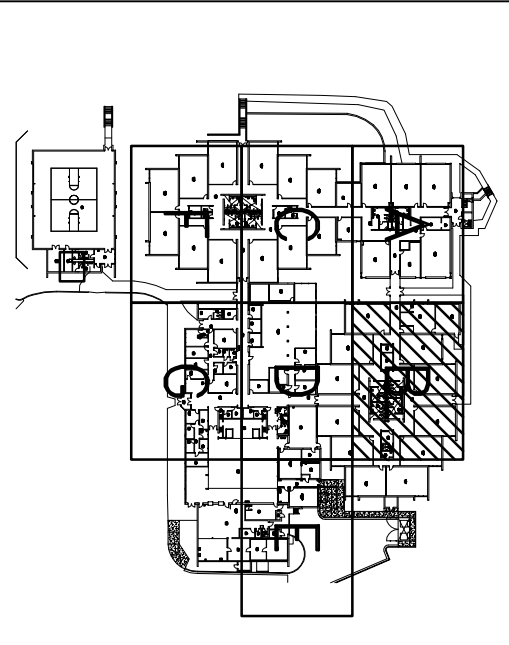
DISPOSITION	DATE
<input checked="" type="checkbox"/> Issued for Client Review	10/28/13
<input type="checkbox"/> Issued for Engineer Review	
<input type="checkbox"/> Issued for Construction	
<input type="checkbox"/> Issued for As-Built	

DATE PLOTTED: 10/28/13
 PLOT SCALE: 1" = 1'-0"
 PLOT DATE: 10/28/13
 SHEET NO.: 10/28/13
 PROJECT NO.:
 SHEET NUMBER:
MP-L1-A



FOR CONTINUATION SEE MP-L1-C

FOR CONTINUATION SEE MP-L1-B



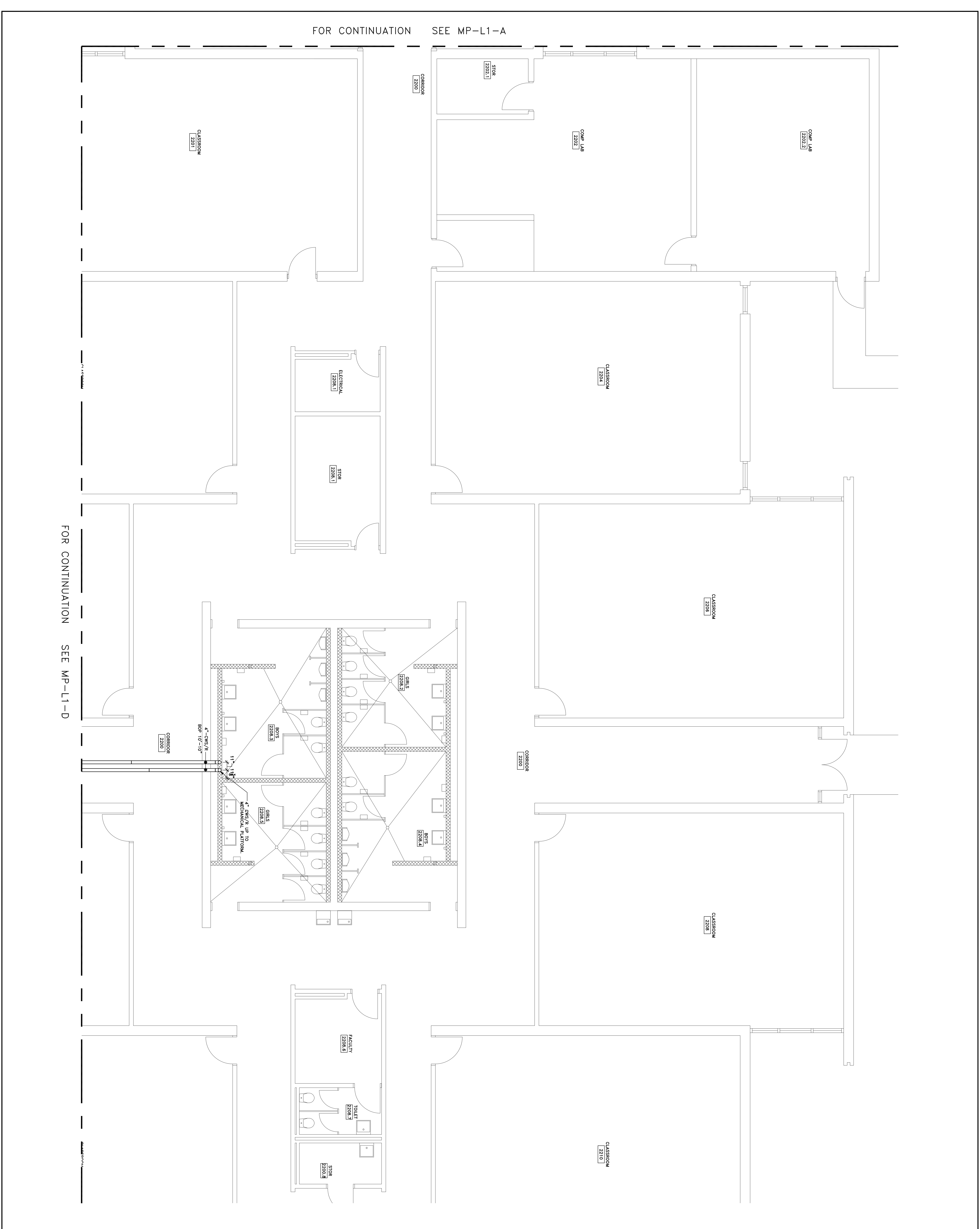
SPALDING DRIVE ELEMENTARY SCHOOL
SPALDING DRIVE ELEMENTARY SCHOOL
MECHANICAL PIPING - PARTIAL
LEVEL 1 - SECTOR B

REVISION	DESCRIPTION	DATE	ISSUED BY
1	ISSUED FOR CLIENT REVIEW	10/28/13	JMB

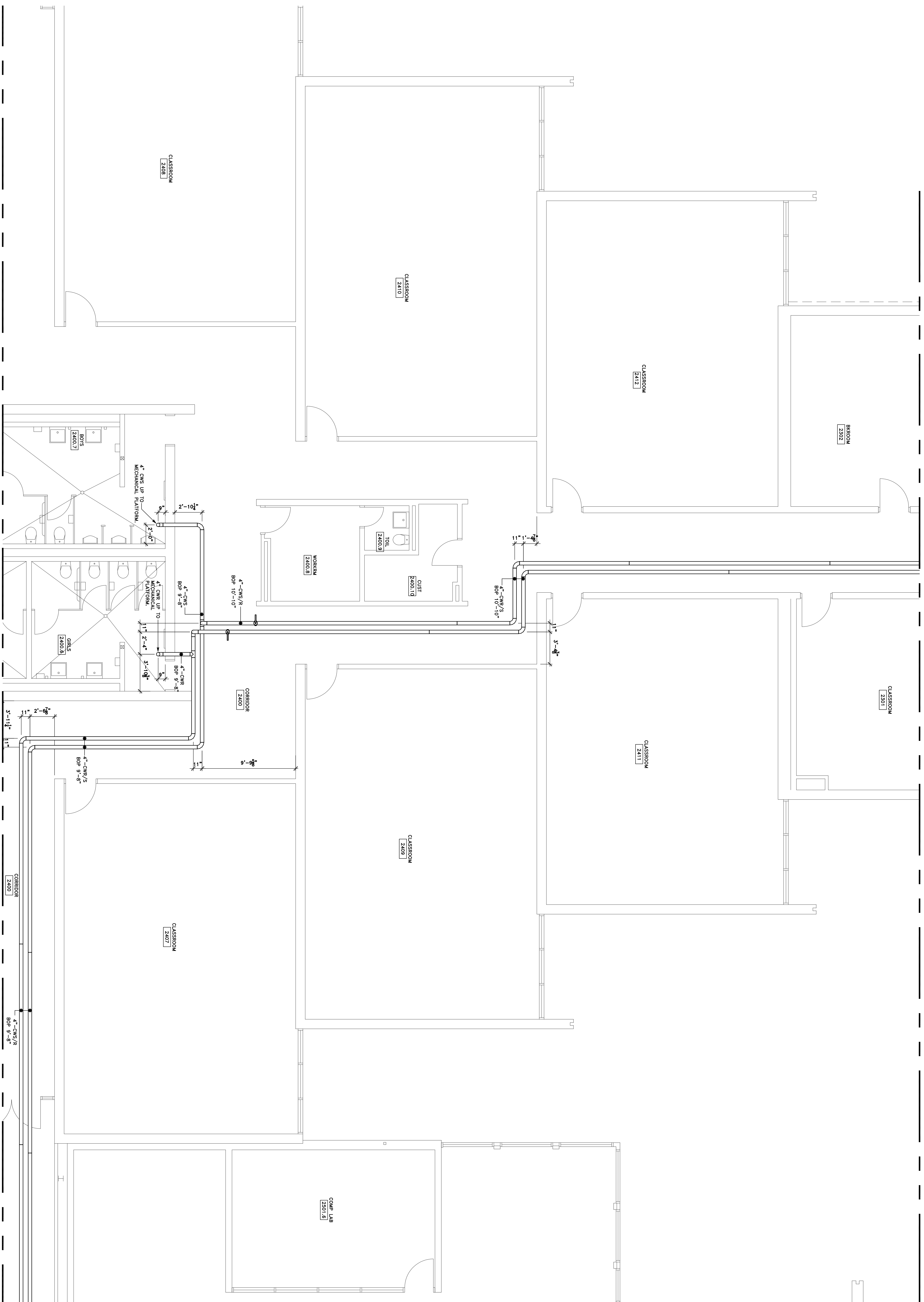
Document Routing

DISPOSITION	DATE
<input checked="" type="checkbox"/> Issued for Client Review	10/28/13
<input type="checkbox"/> Issued for Engineer Review	
<input type="checkbox"/> Issued for Construction	
<input type="checkbox"/> Issued for As-Built	

DRAWING SCALE: DATE PLOTTED: 10/28/13
 PLOTTED BY: MROVMS
 PLOT SCALE: 1/4" = 1'-0"
 PLOT DATE: 10/28/13
 PLOT TIME: 11:00 AM
 PLOT USER: L1-MCH.dwg
 PROJECT NO.: 10/28/13
 SHEET NUMBER:



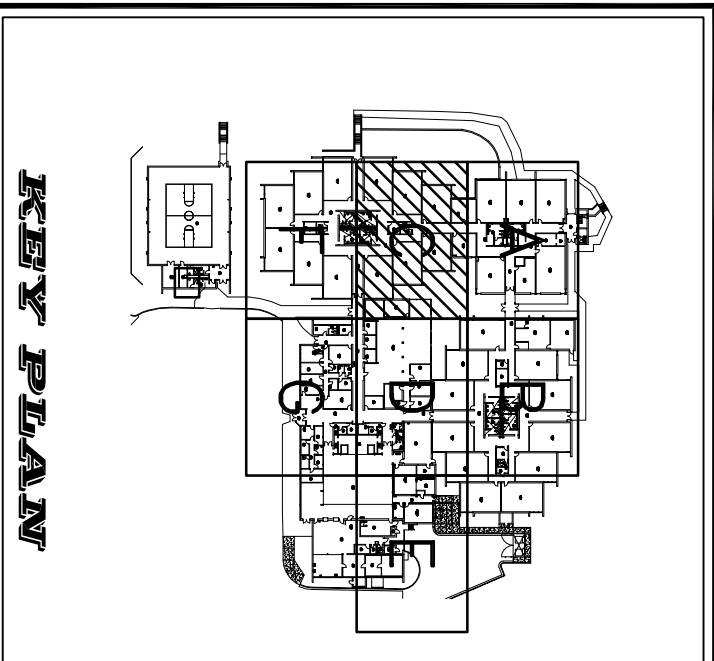
FOR CONTINUATION SEE MP-L1-A



FOR CONTINUATION SEE MP-L1-D

adianta
 DETAILING - MEP COORDINATION - BIM SERVICES
 TECHNOLOGIES INTEGRATED
 75 Indian Creek Trail, Spalding, Georgia 30077
 (770) 725-9182 (770) 725-9183
 E-mail: adianta@adianta.com Web: www.adianta.com

Bardi
 Mechanical
 2175 Royal Palm Ct.
 Norcross, GA 30071
 T 770-283-9300 F 770-283-9400



SPALDING DRIVE ELEMENTARY SCHOOL
SPALDING DRIVE ELEMENTARY SCHOOL
MECHANICAL PIPING - PARTIAL
LEVEL 1 - SECTOR C

REVISION	DESCRIPTION	DATE	ISSUED BY
1	ISSUED FOR CLIENT REVIEW	10/28/13	JMB

Document Routing

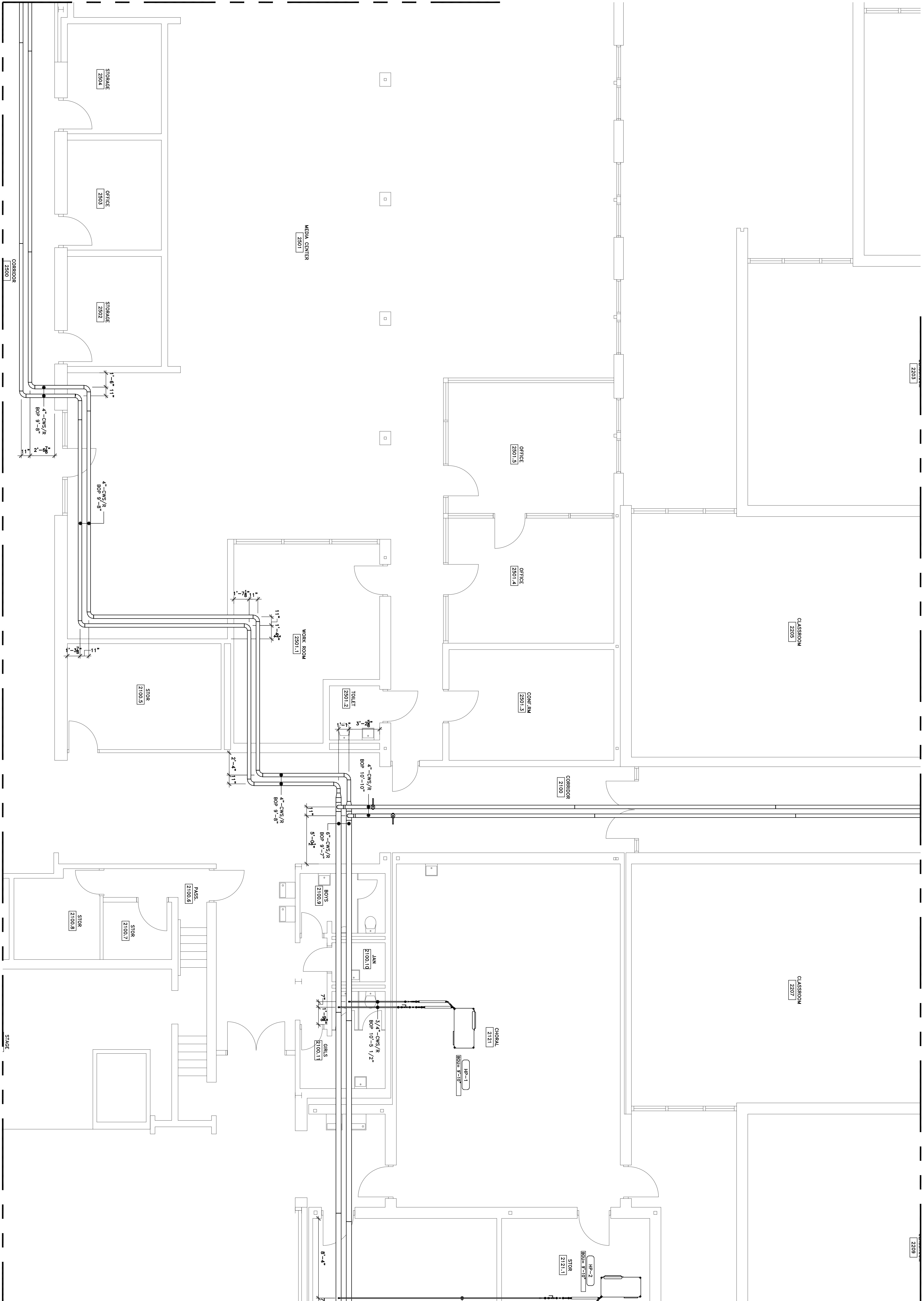
DISPOSITION	DATE
<input checked="" type="checkbox"/> Issued for Client Review	10/28/13
<input type="checkbox"/> Issued for Engineer Review	
<input type="checkbox"/> Issued for Construction	
<input type="checkbox"/> Issued for As-Built	

DATE PLOTTED: 10/28/13
 PLOT DATE: 10/28/13
 PLOT SCALE: 1" = 10'-0"
 PROJECT NO.: 10/28/13
 SHEET NO.: 10/28/13
MP-L1-C

FOR CONTINUATION SEE MP-L1-F

FOR CONTINUATION SEE MP-L1-C

FOR CONTINUATION SEE MP-L1-B

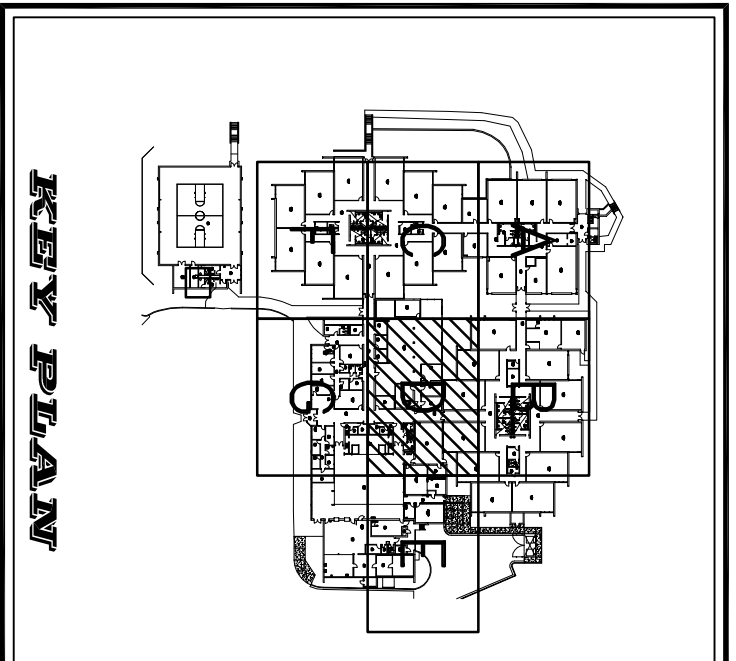


FOR CONTINUATION SEE MP-L1-E

FOR CONTINUATION SEE MP-L1-G

ADIANTE
 DETAILING - MEP COORDINATION - BIM SERVICES
 TECHNOLOGIES INTEGRATED
 75 Indian Creek Trail, Spalding County, Georgia 30077
 (770) 770-5539 (F) 770-770-5539
 E-Mail: adante@adante.com Web: www.adante.com

Bardi
 Mechanical
 2175 Royal Palm Ct.
 Norcross, GA 30071
 T 770-283-9300 F 770-283-9400



SPALDING DRIVE ELEMENTARY SCHOOL
SPALDING DRIVE ELEMENTARY SCHOOL
MECHANICAL PIPING - PARTIAL
LEVEL 1 - SECTOR D

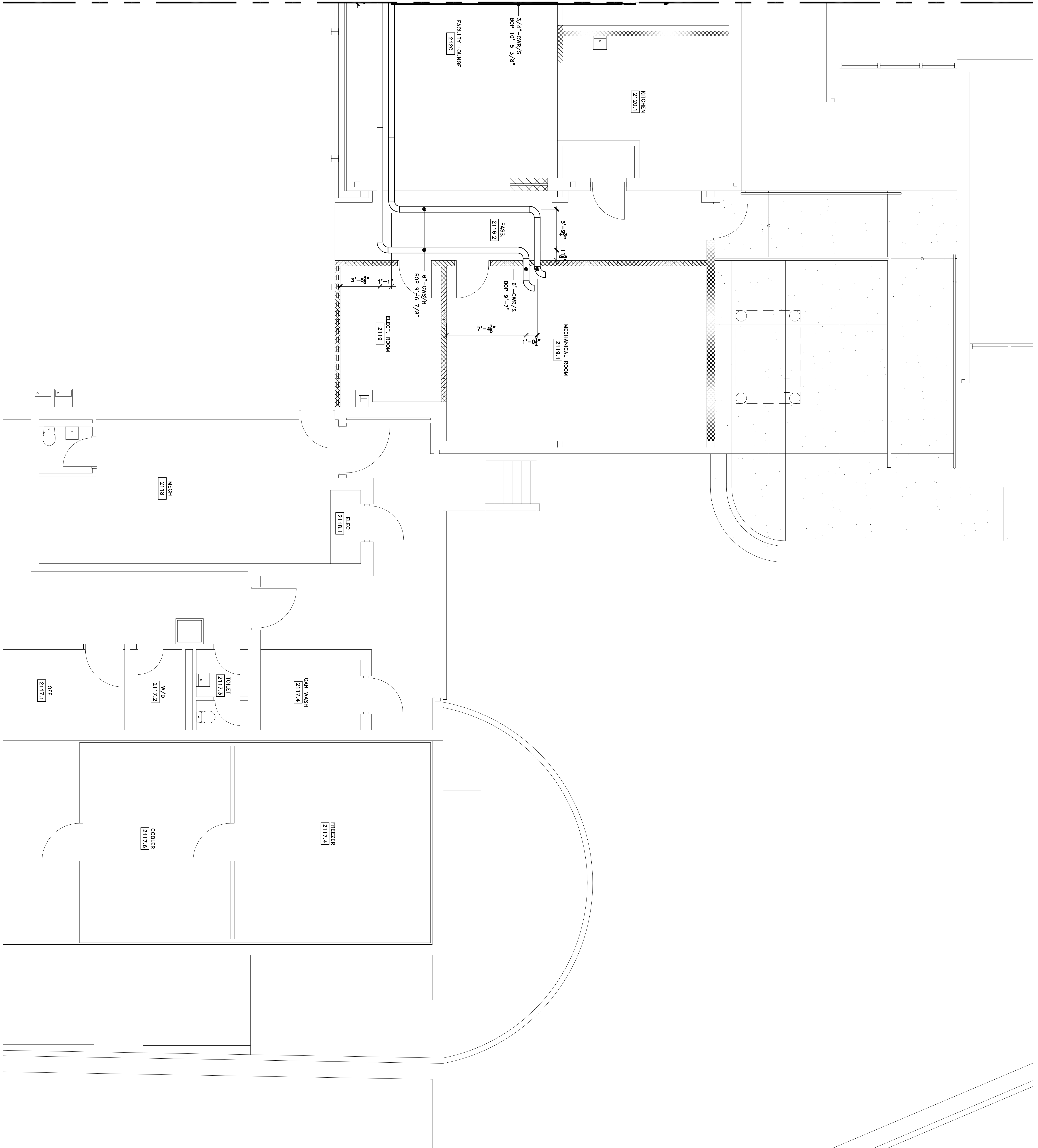
REVISION	DESCRIPTION	DATE	ISSUED BY
1	ISSUED FOR CLIENT REVIEW	10/28/13	JMB

Document Routing

DISPOSITION	DATE
<input checked="" type="checkbox"/> Issued for Client Review	10/28/13
<input type="checkbox"/> Issued for Engineer Review	
<input type="checkbox"/> Issued for Construction	
<input type="checkbox"/> Issued for As-Built	

DRAWN BY:
 PROJECT NO.:
 SHEET NO.:
MP-L1-D

FOR CONTINUATION SEE MP-L1-D



adianta
 DETAILING - MEP COORDINATION - BIM SERVICES
 TECHNOLOGIES INTEGRATED
 75 Indian Creek Trail, Spalding, Georgia 30077
 (770) 725-9182 (770) 725-9183
 E-mail: adianta@adianta.com Web: www.adianta.com

Bardi
 Mechanical
 2175 Royal Palm Ct.
 Norcross, GA 30071
 T 770-283-9300 F 770-283-9400

KEY PLAN

SPALDING DRIVE ELEMENTARY SCHOOL

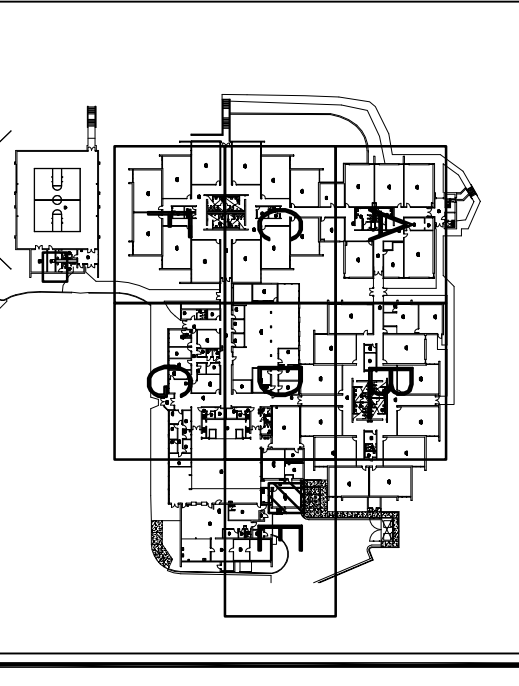
SPALDING DRIVE ELEMENTARY SCHOOL
 MECHANICAL PIPING - PARTIAL
 LEVEL 1 - SECTOR E

REVISION	DESCRIPTION	DATE	ISSUED BY
1	ISSUED FOR CLIENT REVIEW	10/28/13	JMB

Document Routing

DISPOSITION	DATE
<input checked="" type="checkbox"/> Issued for Client Review	10/28/13
<input type="checkbox"/> Issued for Engineer Review	
<input type="checkbox"/> Issued for Construction	
<input type="checkbox"/> Issued for As-Built	

DESIGNED BY: **MORVINS** DATE: 10/28/13
 DRAWN BY: **MORVINS** DATE: 10/28/13
 CHECKED BY: **MORVINS** DATE: 10/28/13
 PROJECT NO.: **LI-MECH.dwg** PROJECT NO.: 10/28/13
 Sheet Number: **MP-L1-E**



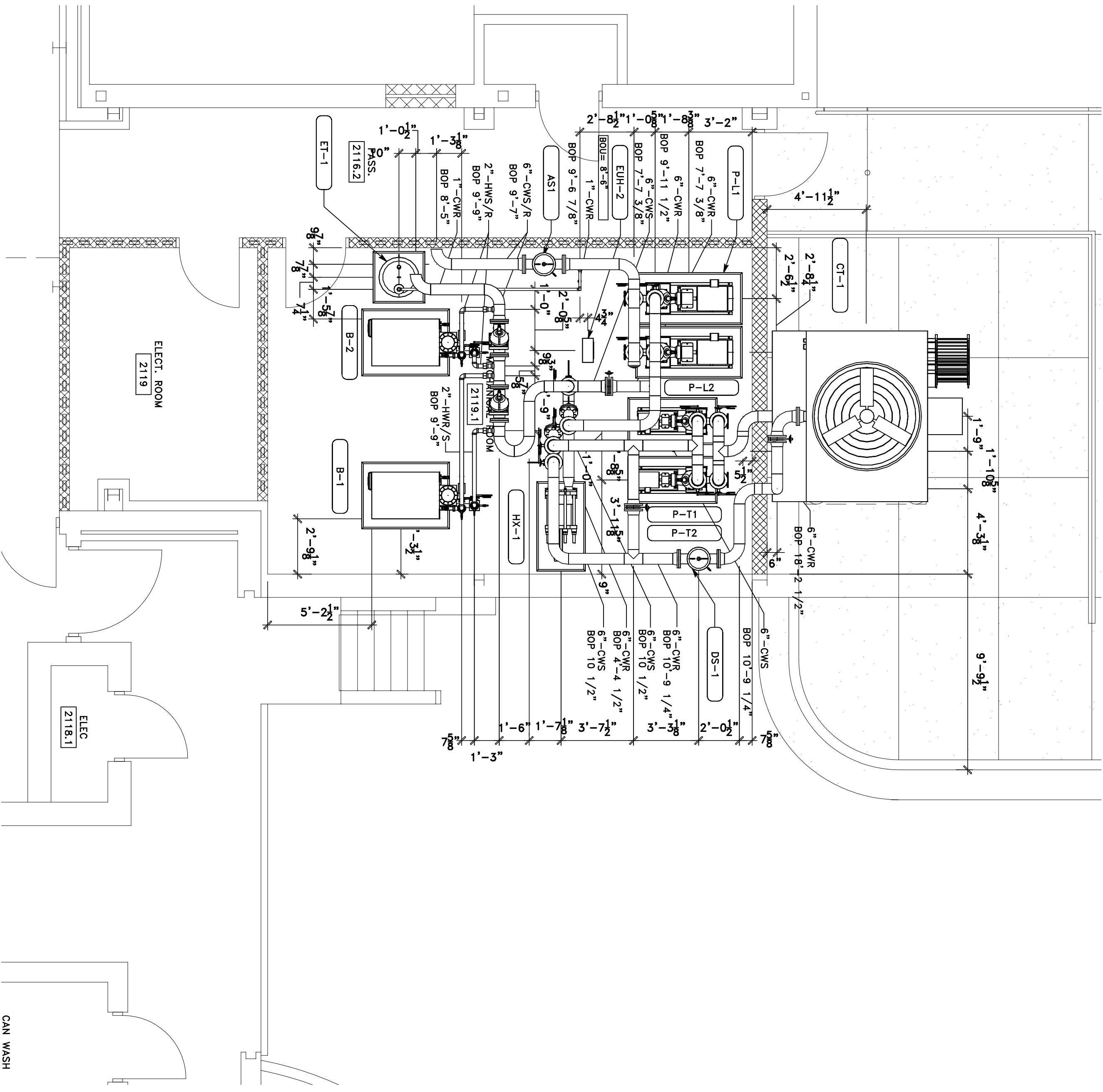
SPALDING DRIVE ELEMENTARY SCHOOL
SPALDING DRIVE ELEMENTARY SCHOOL
MECHANICAL PIPING - PARTIAL
LEVEL 1 - MECHANICAL ROOM

REVISION	DESCRIPTION	DATE	ISSUED BY
1	ISSUED FOR CLIENT REVIEW	10/28/13	JMB

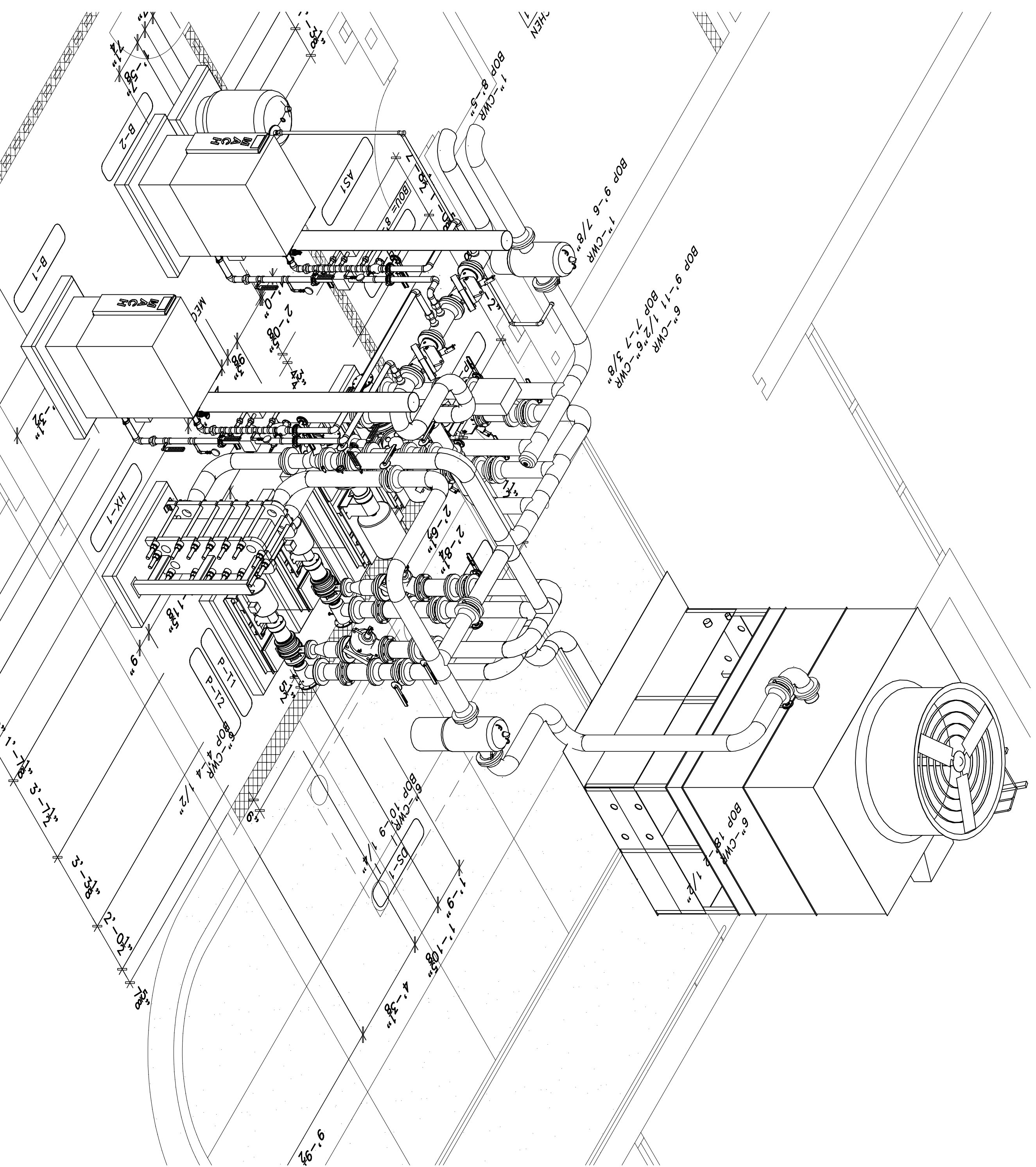
Document Routing

DISPOSITION	DATE
<input checked="" type="checkbox"/> Issued for Client Review	10/28/13
<input type="checkbox"/> Issued for Engineer Review	
<input type="checkbox"/> Issued for Construction	
<input type="checkbox"/> Issued for As-Built	

DRAWING BY: **MEROM**
 CHECKED BY: **0**
 DATE: **10/28/13**
 PROJECT NO.: **10/28/13**
MP-L1-MR



MECHANICAL ROOM - 2119.1
PLAN VIEW



MECHANICAL ROOM - 2119.1
ISOMETRIC VIEW